

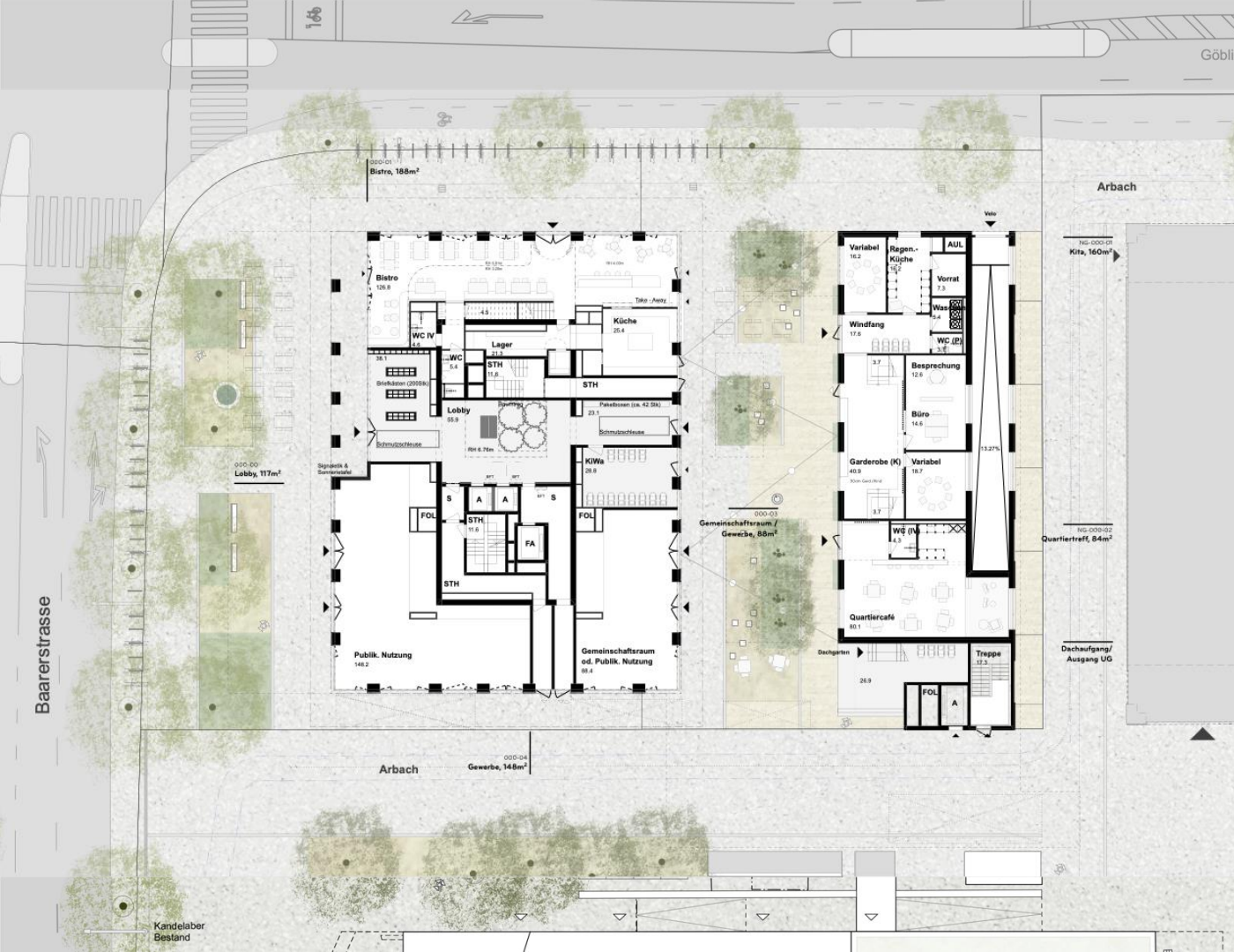
DUPLEX ARCHITEKTEN

HOLZHOCH-  
HAUS «*Pi*»

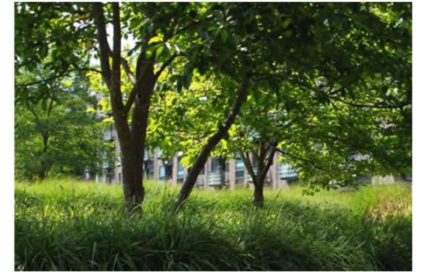








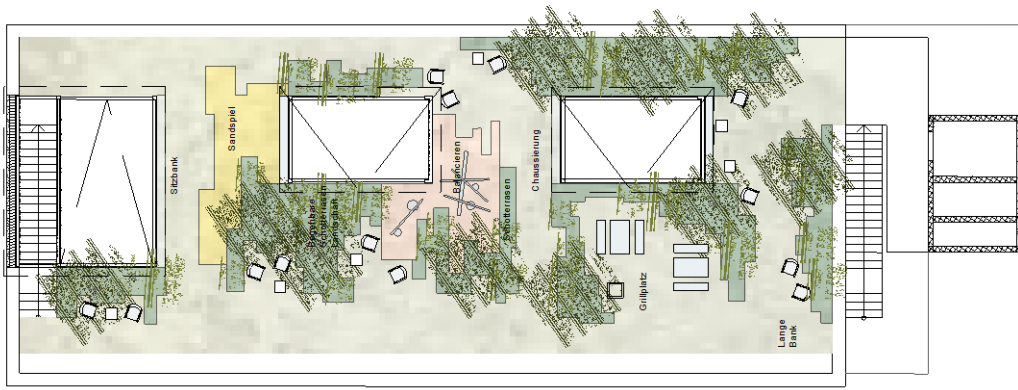
Referenz Entrée Hochhaus



Referenz Pflanzflächen



Referenz Chaussierung mit Sitzmöbeln



Referenz Fassadenbegrünung Hofhaus



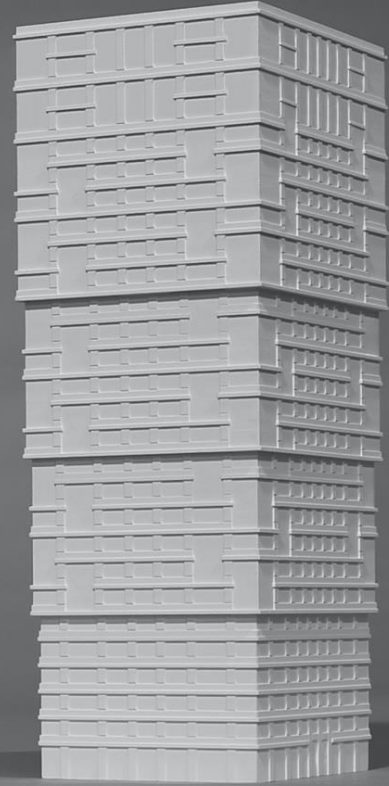
Referenz Bepflanzung Dachgarten



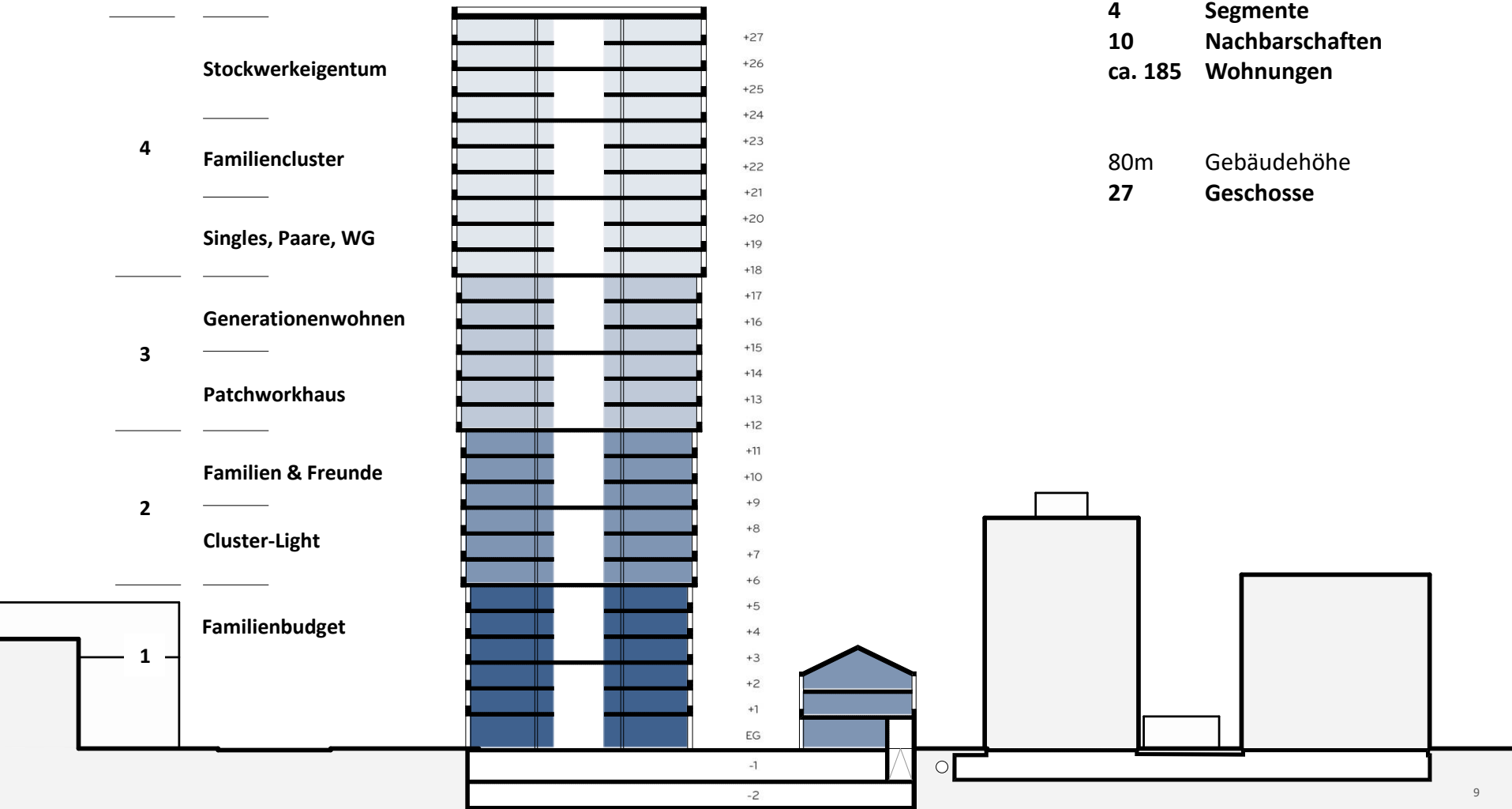
Referenz Rasenfugen / Plattenbelag





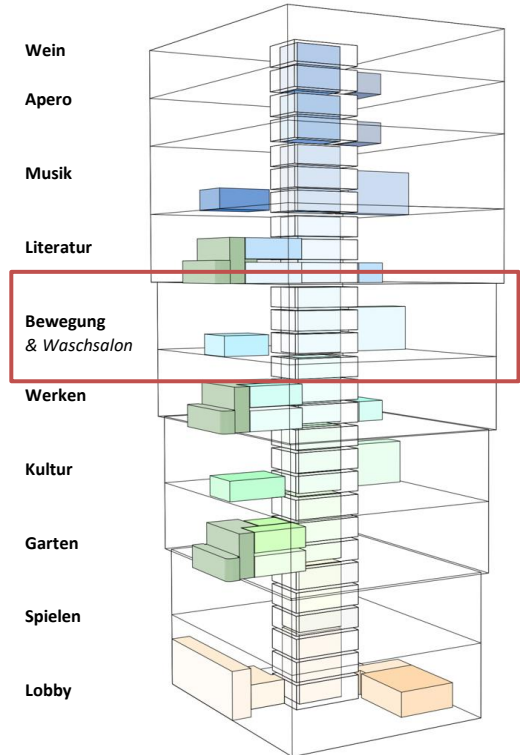






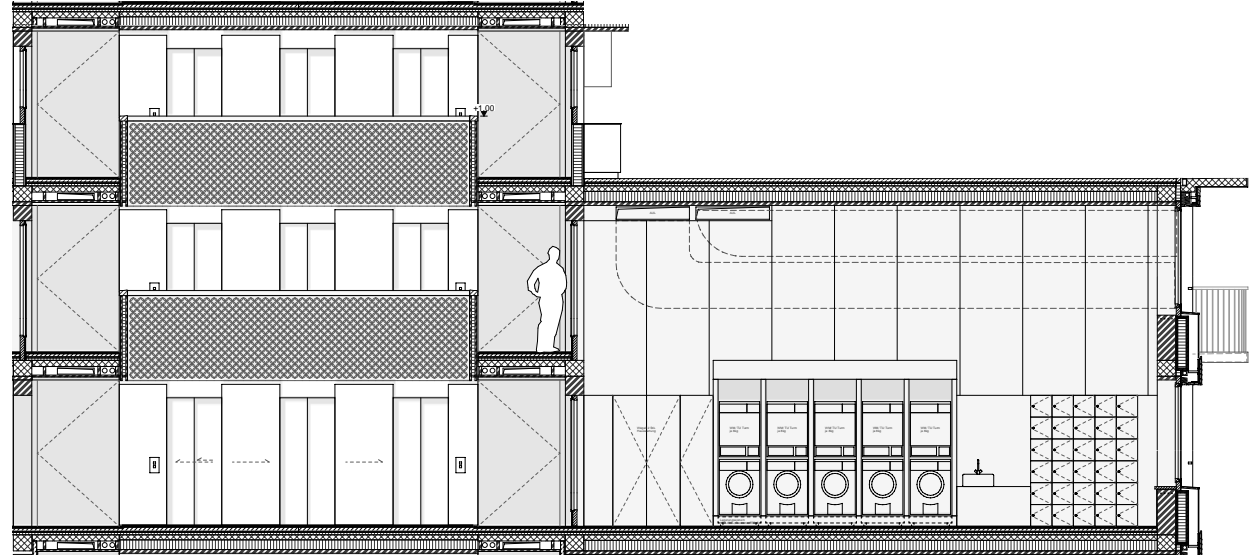


## Vertikale Nachbarschaft



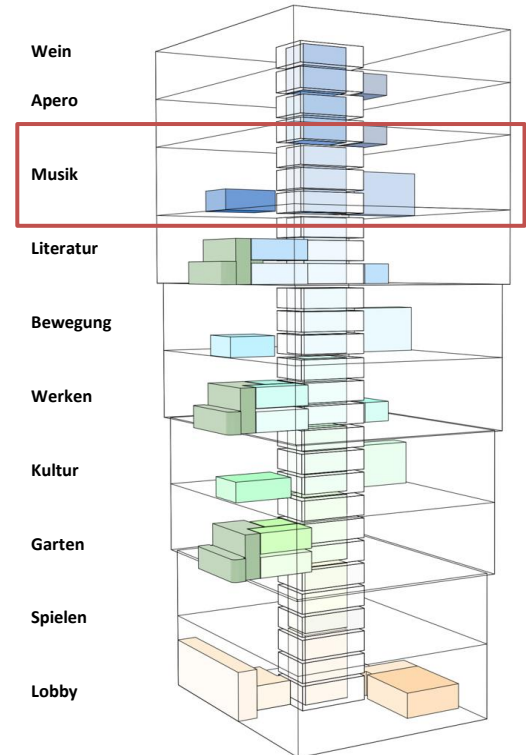


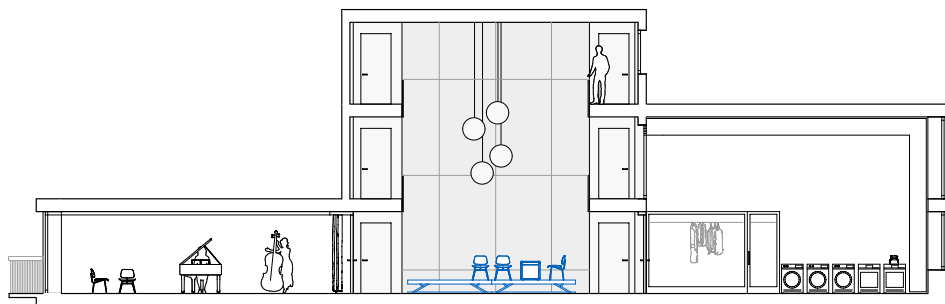
Treppenhaus Haus M, Mehr als Wohnen,  
Zürich, Duplex Architekten



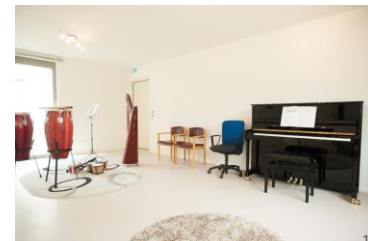


## Vertikale Nachbarschaft

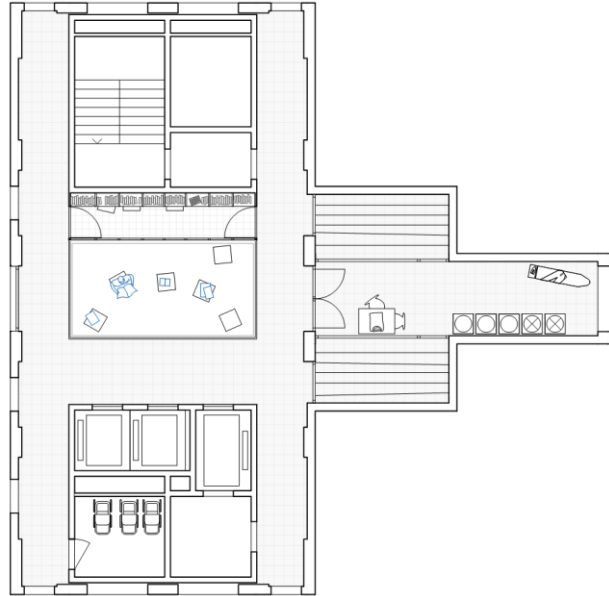




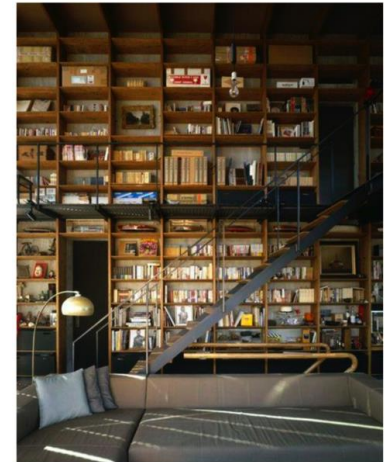
Musikerwohnhaus, Basel  
Buol & Zünd (2013)



## Piazza mit Hausbücherei

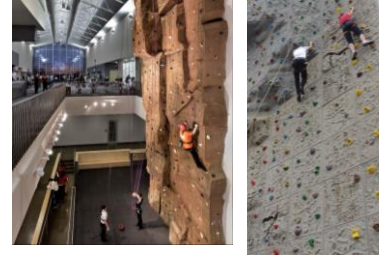
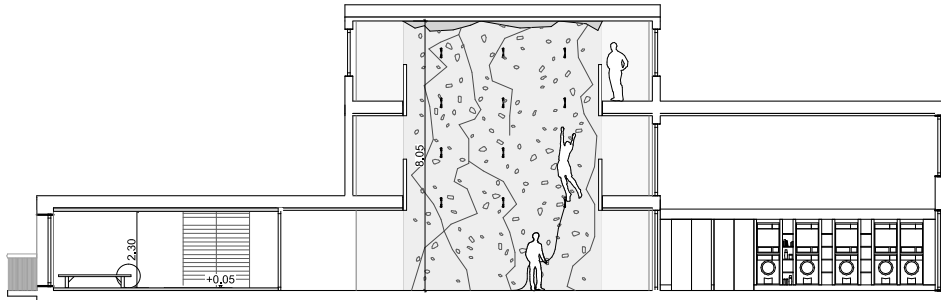
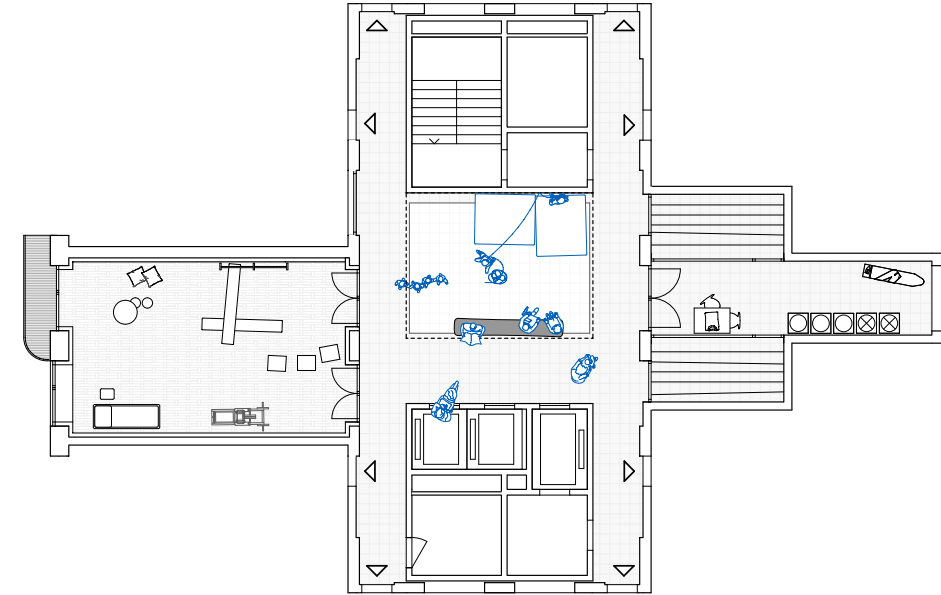


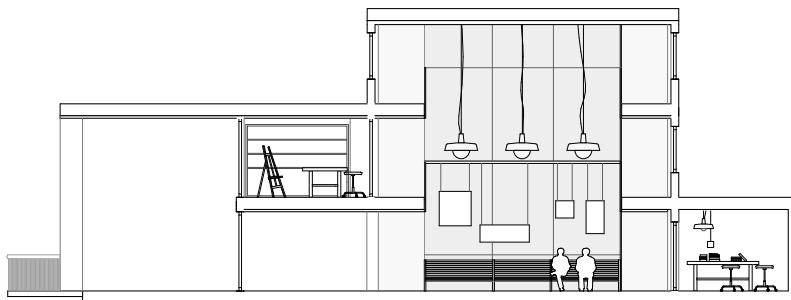
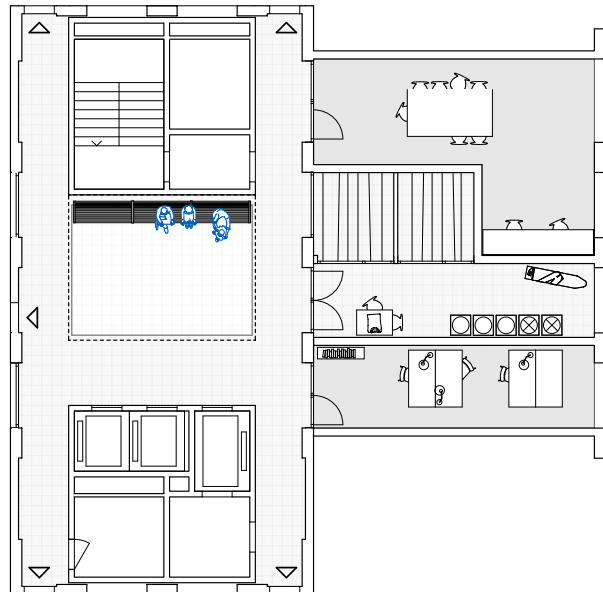
Beinecke Library, Yale University  
Gordon Bunshaft, 1963 (Foto, C.Höfer)



M3, Tokyo,  
Mount Fuji Architects

# Bewegungsraum & Kletterwand





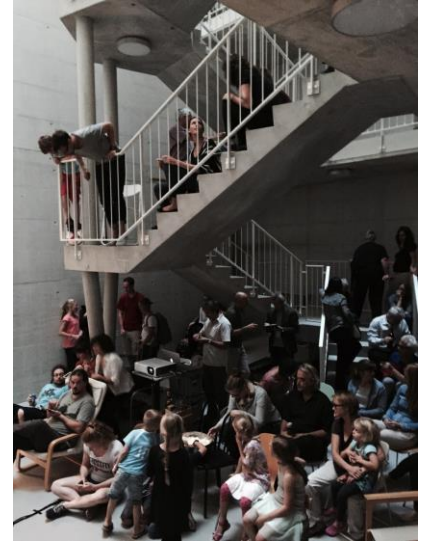
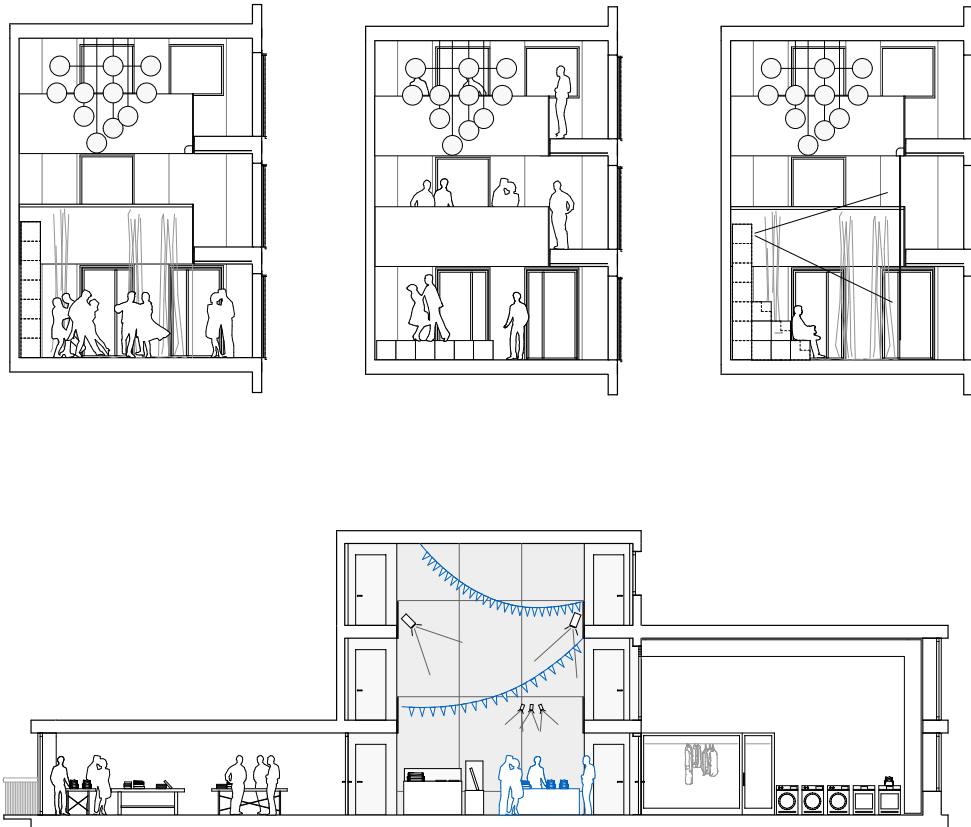
Velowerkstatt am Treppenhaus,  
Mehr als Wohnen, Haus M, Zürich



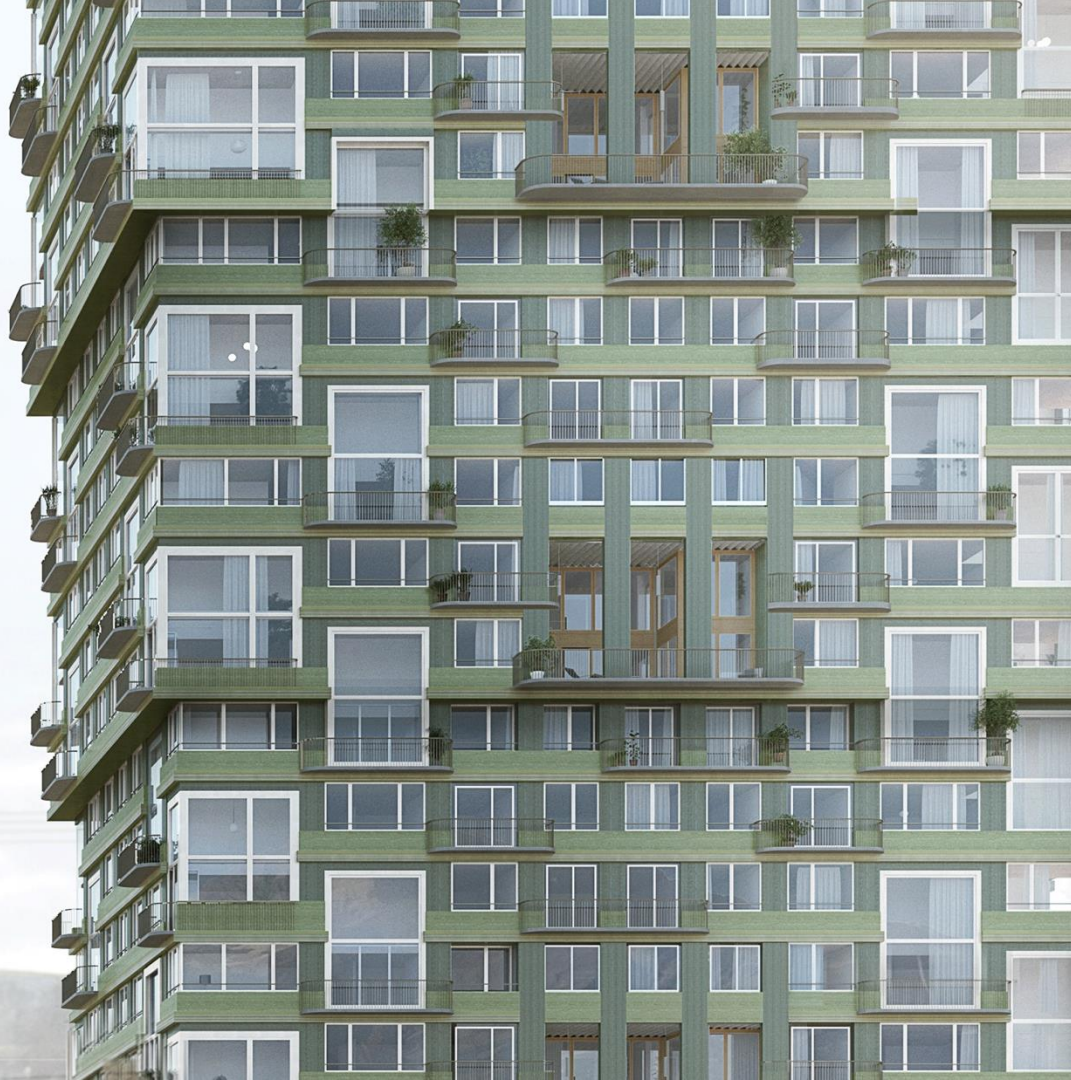
Remise Museum Rietberg, Zürich  
Jörg Boner, 2012



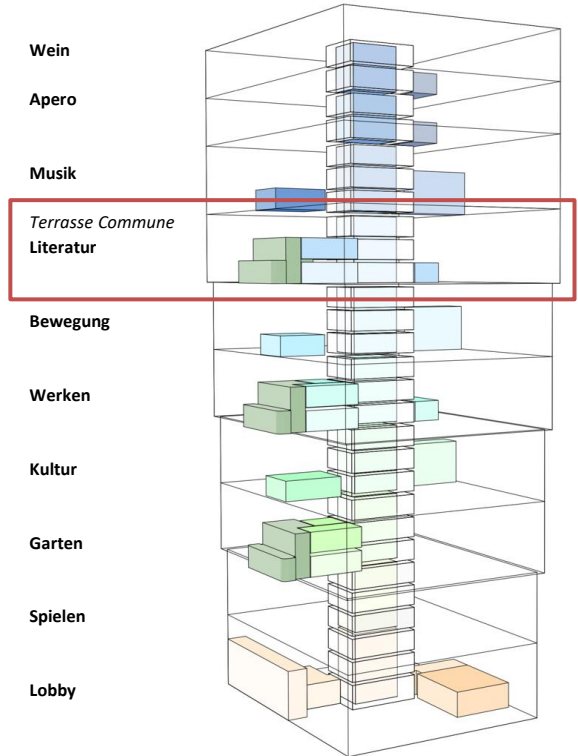
## temporär bespielt: Installationen & Events



Treppenhauskino, Mehr als Wohnen,  
Zürich, Duplex Architekten



## Terrasses Communes

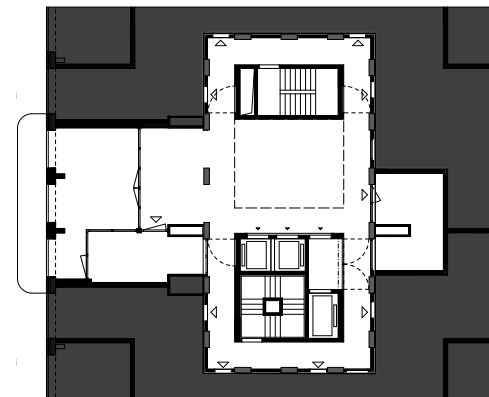




## Terrasses Communes



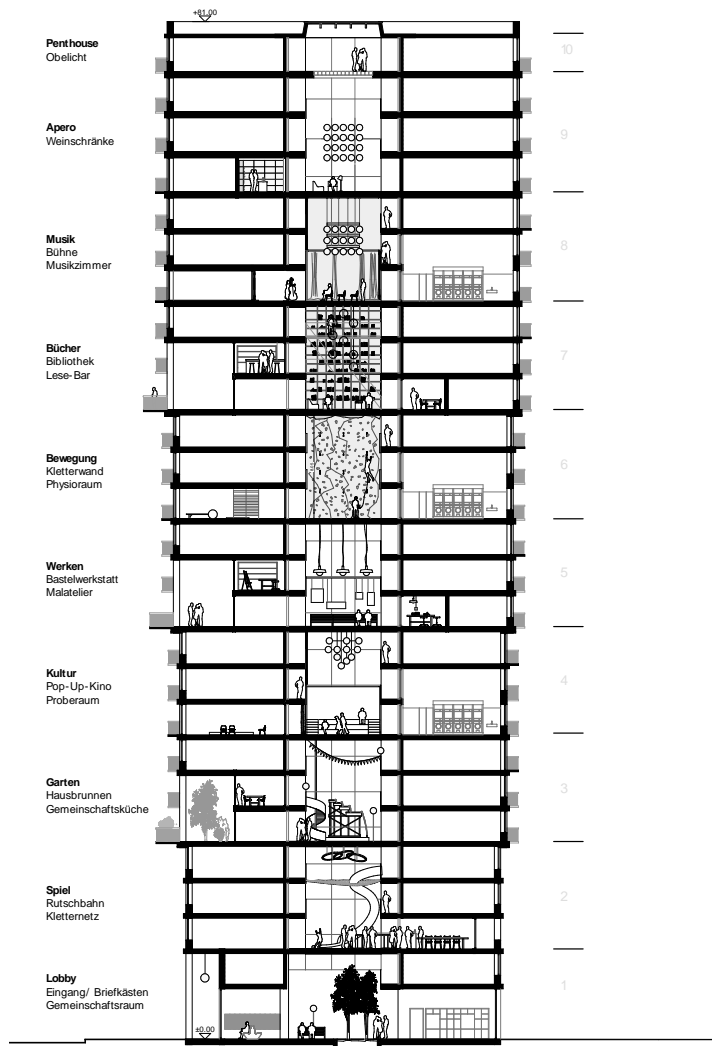
Piazza +1



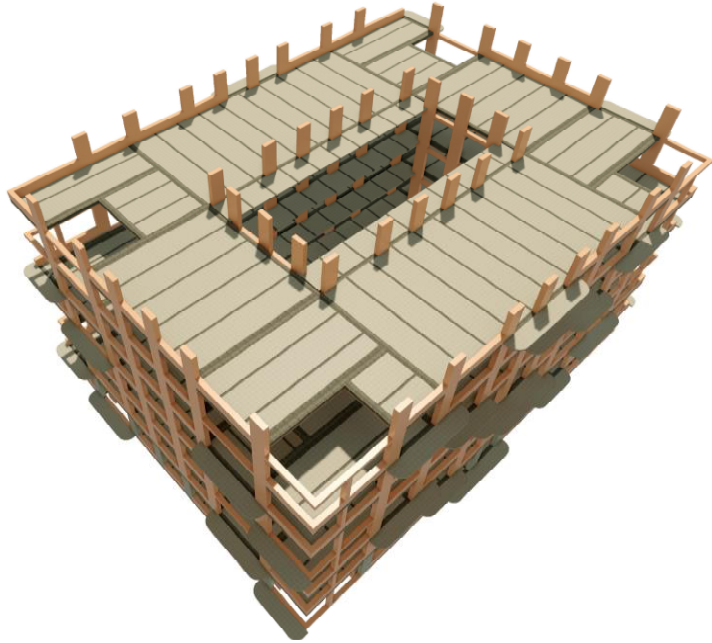
Piazzageschoss



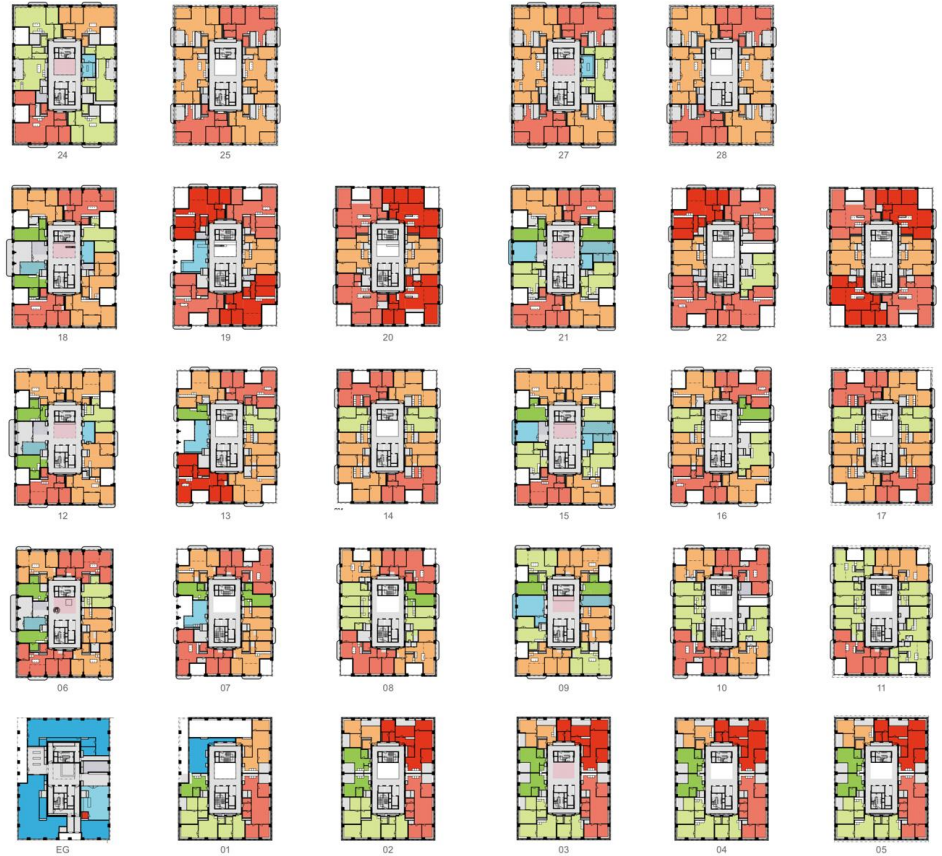
# Vertikale Nachbarschaft

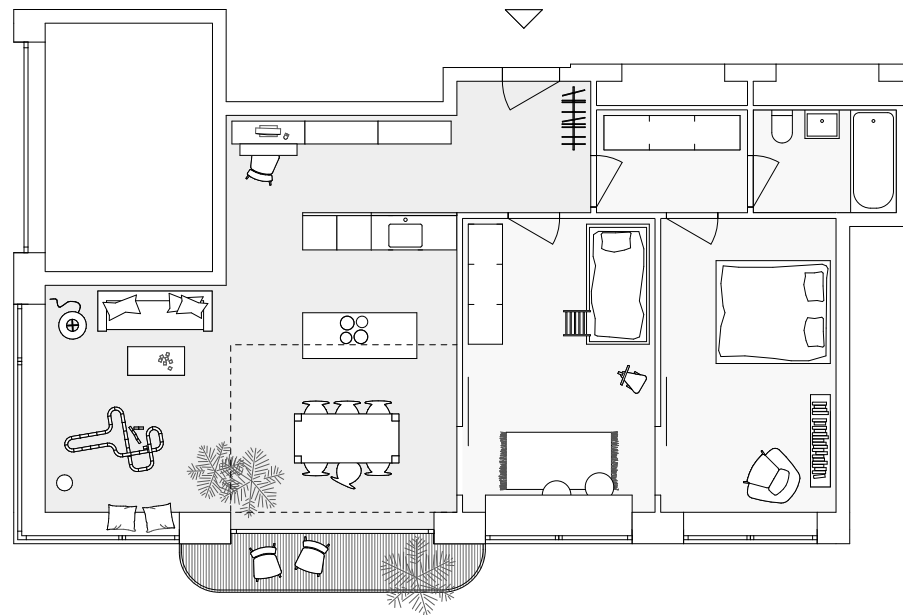


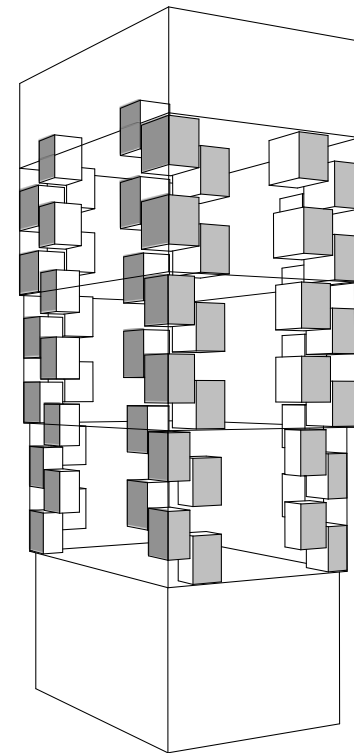
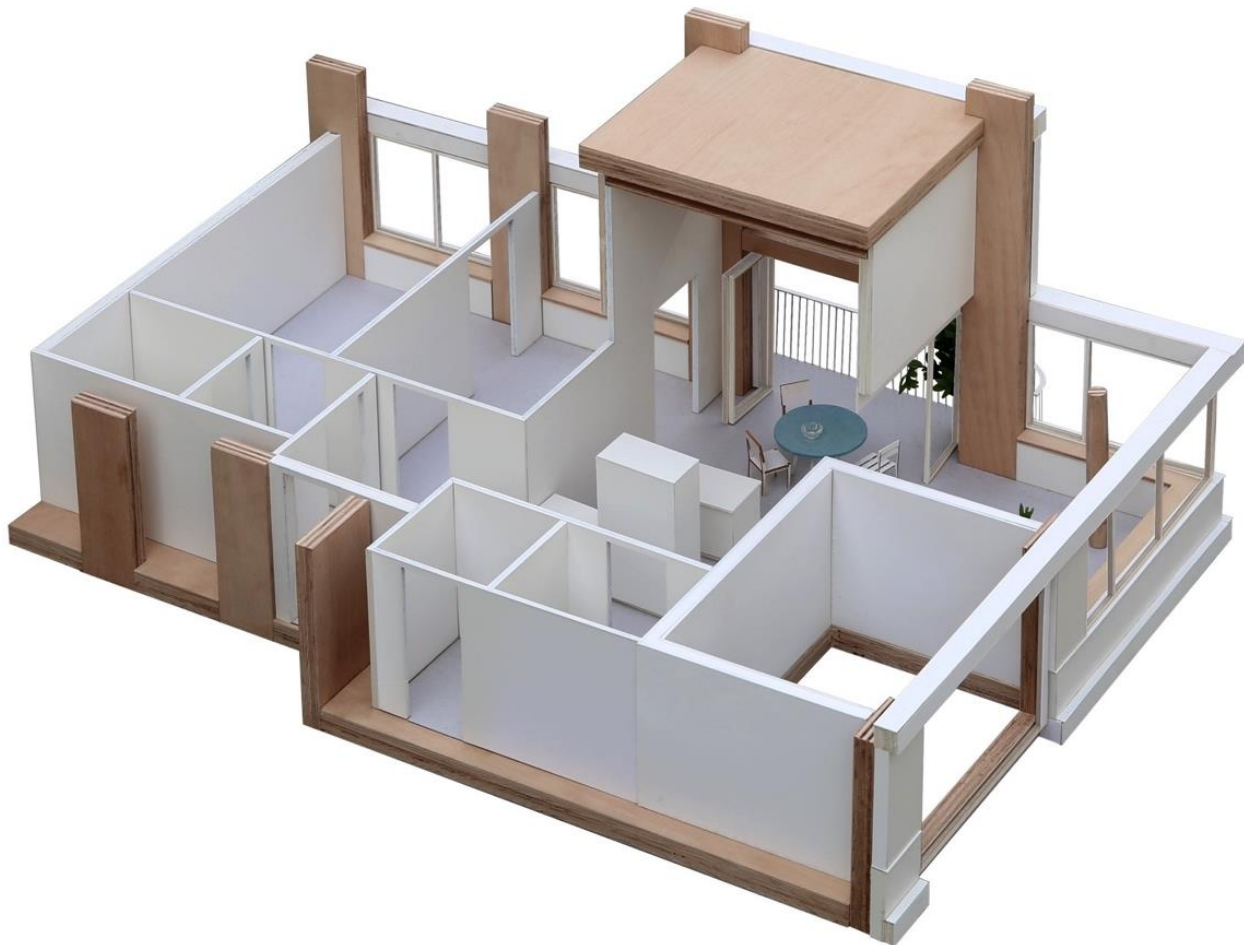
N°	Thema	Raumprogramm	Wohnthema
10	Wein	Weinhumidor	STWE
9	Apéro	Apéroküche	STWE
8	Musik	Musizierzimmer Proberäume Waschsalon Trockenräume	Familienwohnen
7	Literatur	Terrasse Commune Bücherwand Schreibwerkstatt Lese-Bar Waschsalon	Singles, Paare, Wohngemeinschaft
6	Bewegung	Kletterwand Physio- / Bewegungsraum Waschsalon Trockenräume	Generationenwohnen
5	Werken	Terrasse Commune Waschsalon Bastelwerkstatt Malatelier	Patchworkhaus
4	Kultur	Bühne/ Tribüne Optionsraum Waschsalon	Familien & Freunde
3	Garten	Terrasse Commune Hausbrunnen Gemeinschaftsküche Waschsalon	Mix'n Match mit Cluster-light
2	Spielen	Spielplatz	Familienbudget
1	Lobby	Spielzimmer Gemeinschaftsküche Waschsalon Briefkästen Gemeinschaftsraum Bistro	-



Tragwerk aus äusserem und innerem Tube mit „hohlem Kern“



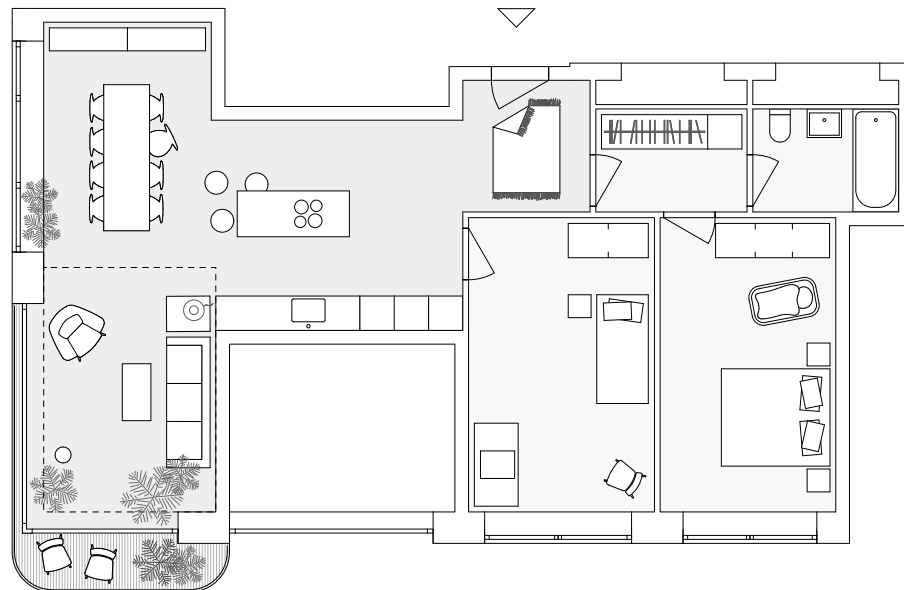




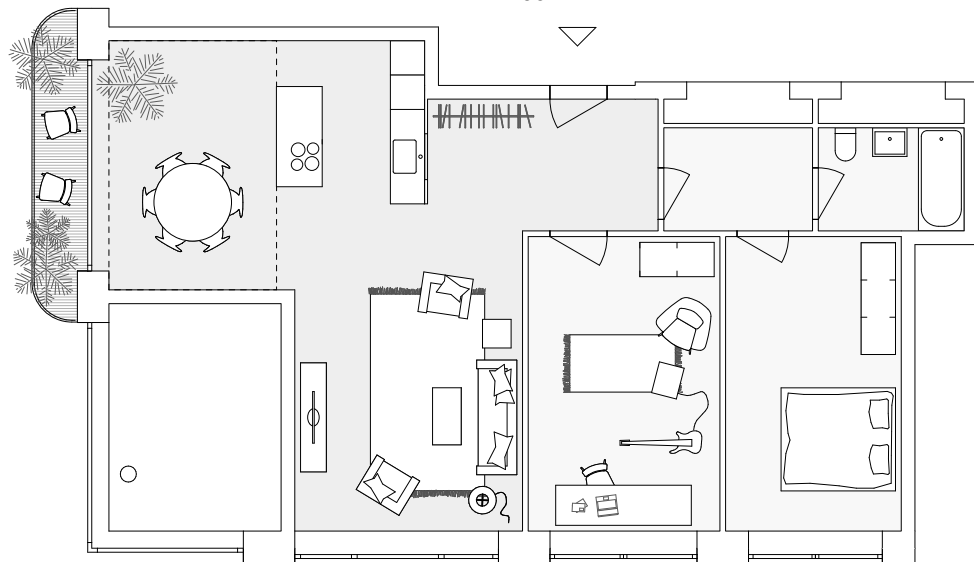




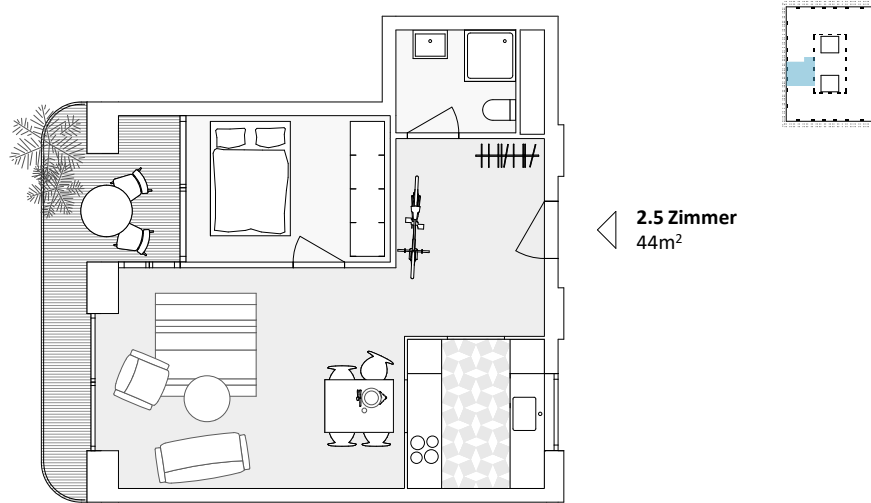




11.OG, 3.5 Zimmer  
89m<sup>2</sup>



## Singles, Paare & Freunde

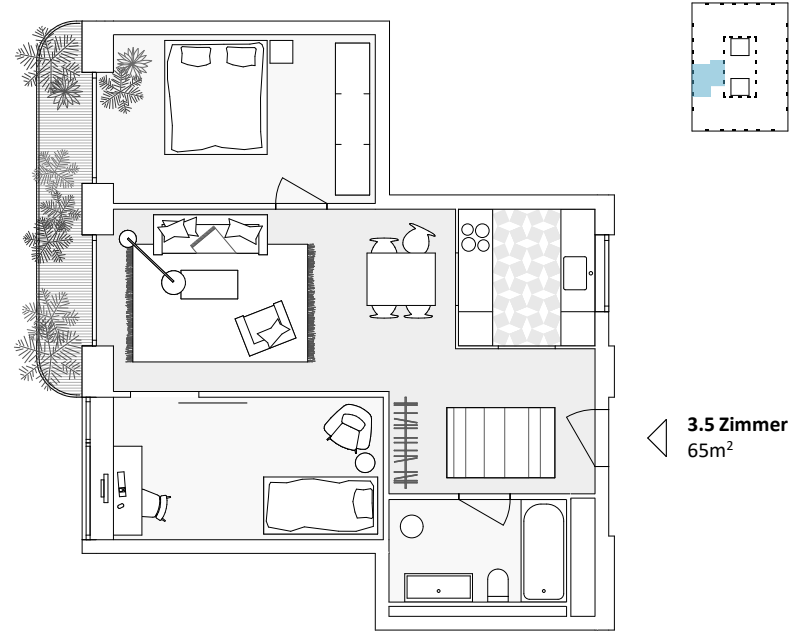


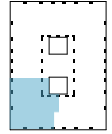
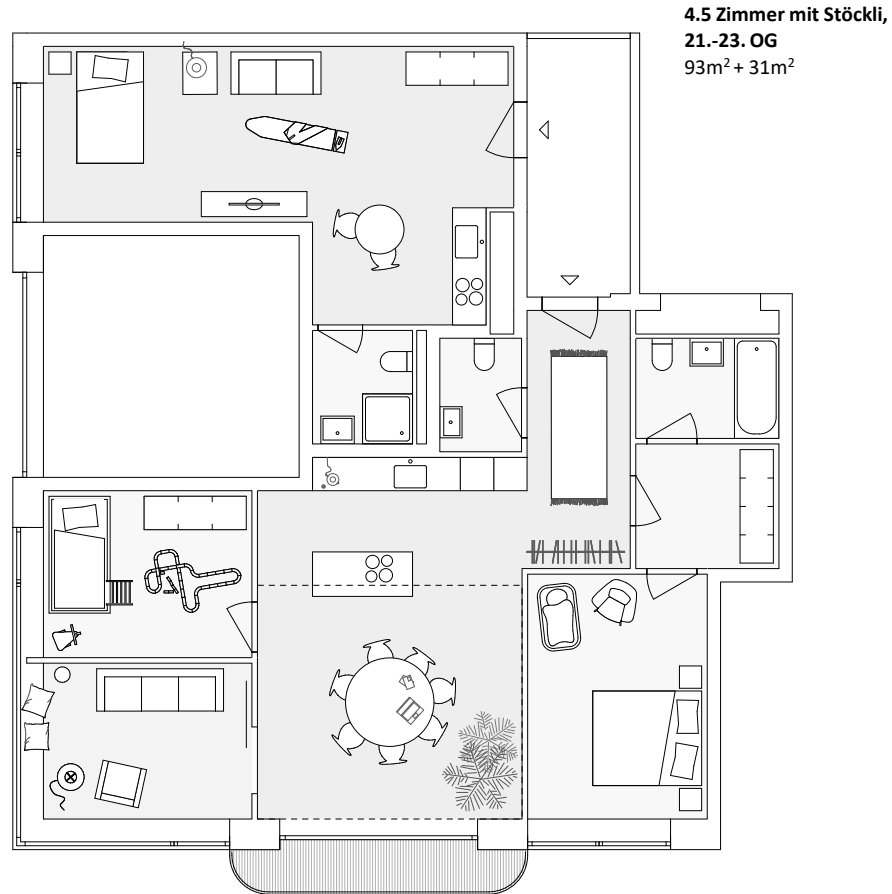
Küchenfenster zur Piazza  
Haus M, Duplex Architekten



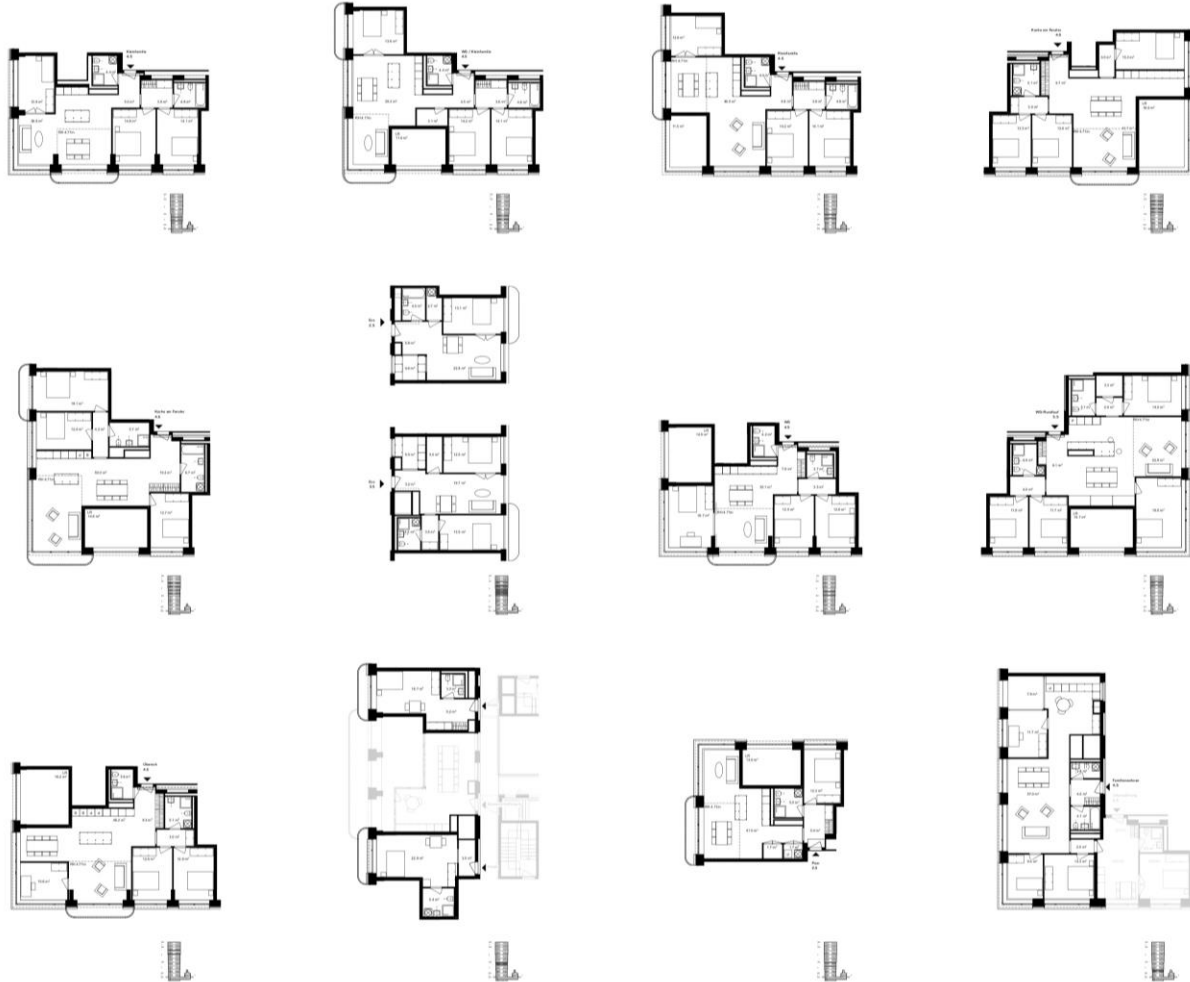
verglaste Küchenzelle bei Entree  
Haus Trübbach, Studio Märkli

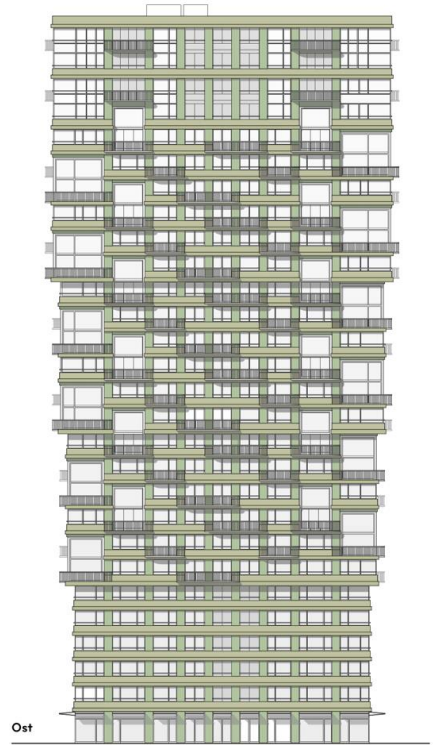
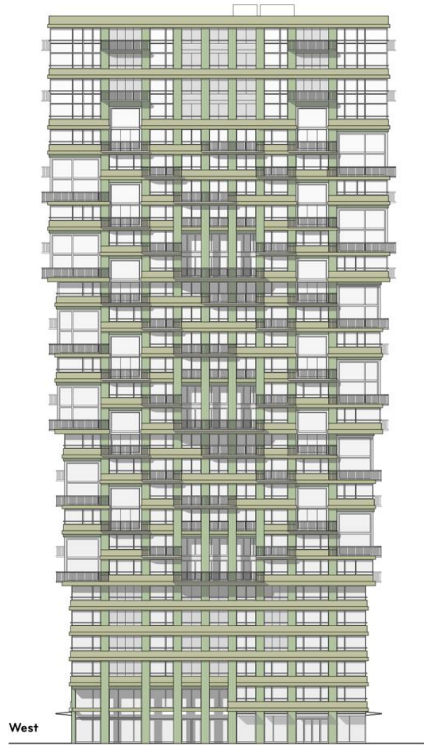
## Generationenwohnen





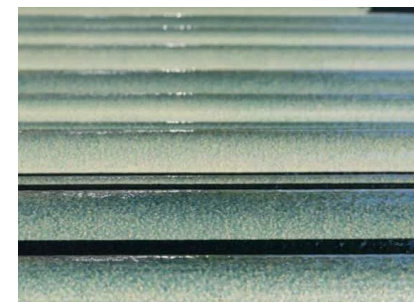
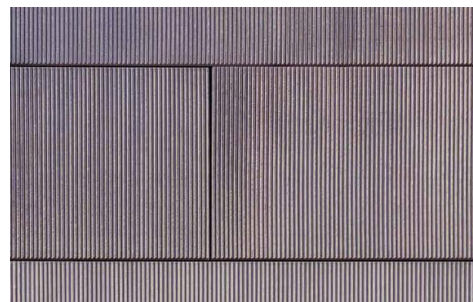
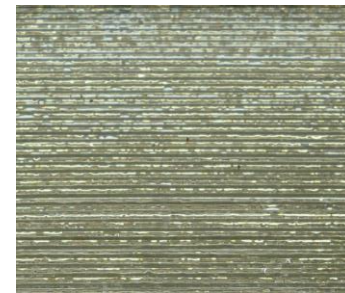
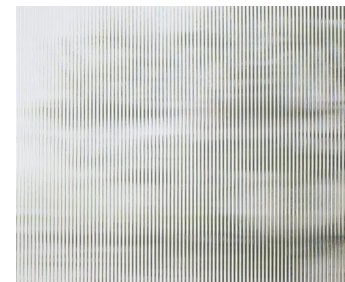
Beispielbild Bauernhaus und Stöckli  
Ferenberg, Schweiz







## Das Haus als Kraftwerk: BIPV mit 280 kWp



# *Synthese*

NACHHALTIGE KONSTRUKTION

HOLZRAHMENTRAGWERK

SUFFIZIENZ

VERTIKALE NACHBARSCHAFT

RÄUMLICHE DICHTHEIT, SOZIALE BREITE

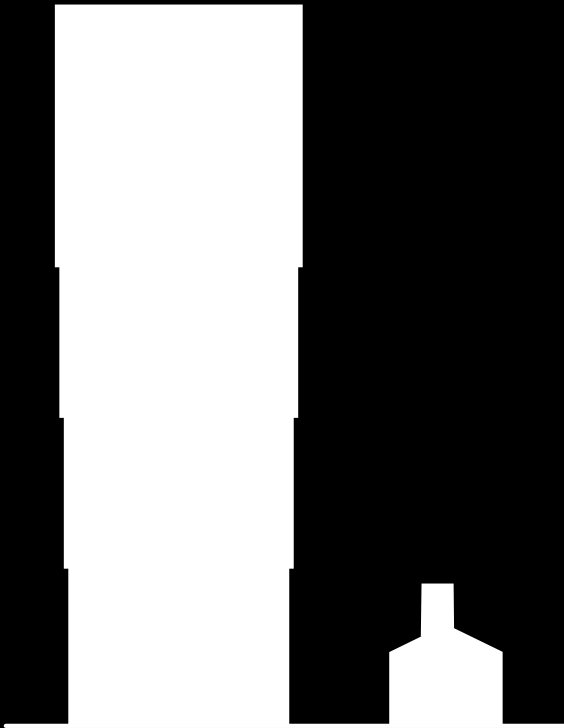
AUS DEM KONTEXT ENTWICKELT

AKTIVIERUNG ERDGESCHOSS

MEHRWERT FÜRS GEVIERT

WIRKUNG NAH UND FERN

LEBENDIGE FASSADE, BEWOHNTE HAUS





*Vielen  
Dank!*